



Castles

GUIDE PRICE

£650,000-£675,000

Belsize Avenue

Palmers Green, N13 4TL

Castles

PROPERTY SUMMARY

Guide Price £650,000-£675,000 A generous four-bedroom period family home offering over 1,400 sq ft (approx.) of well-arranged living accommodation, with further potential for expansion into the spacious loft (subject to planning consent).

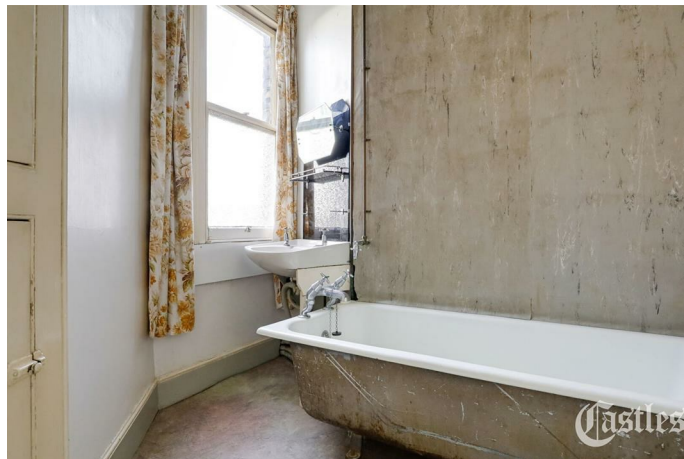
Brimming with character, the property features beautiful fireplaces, sash windows, elegant ceiling roses, and an inviting sense of space throughout. The ground floor comprises a welcoming entrance hall, a bright front reception room, a second reception room, a well-proportioned kitchen, and a separate utility room. Additional benefits include a ground-floor guest W/C and a large south-facing rear garden, perfect for family living and entertaining.

The first floor offers a family bathroom and four well-sized, comfortable bedrooms, providing ample accommodation for a growing household.

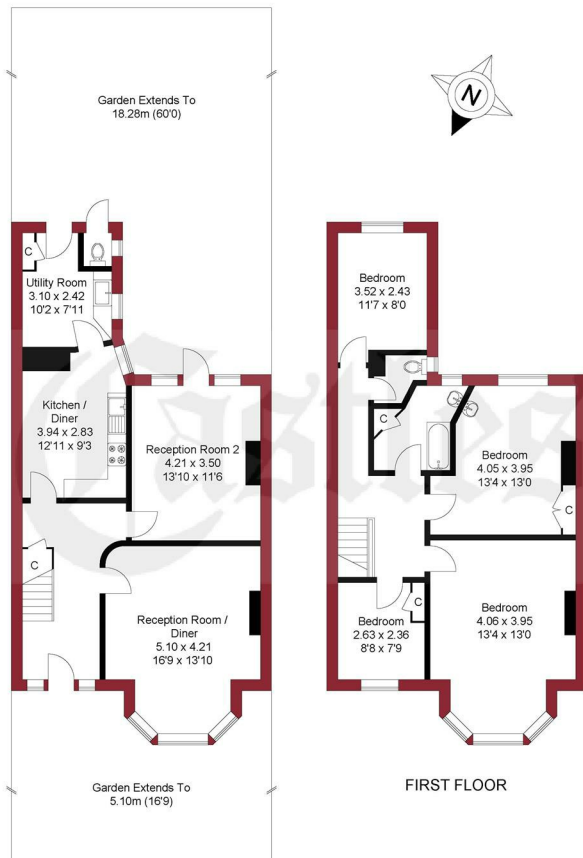
Ideally situated on a quiet one-way residential road, just moments away from a wide range of local amenities, including the popular Myddleton Road and both Bowes Park and Bounds Green stations.

While the property would benefit from modernisation, it presents a fantastic opportunity for buyers to tailor the home to their own taste and maximise its full potential.





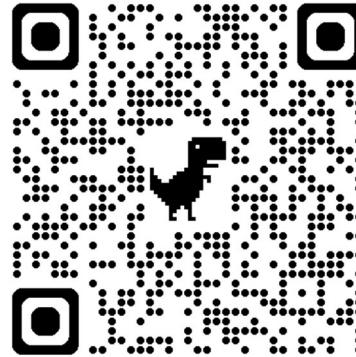
APPROXIMATE GROSS INTERNAL AREA
130.41 sqm / 1403.72 sqft



GROUND FLOOR

THIS PLAN IS FOR ILLUSTRATION ONLY AND MAY NOT BE
REPRESENTATIVE OF THE PROPERTY

For a guide to the area
please scan this code for
more information



House

Freehold

Council Tax Band: E

Agents Note: Whilst every care has been taken to prepare these particulars, they are for guidance purposes only. All measurements are approximate and are for general guidance purposes only and whilst every care has been taken to ensure their accuracy, they should not be relied upon and potential buyers/tenants are advised to recheck the measurements



OFFICE ADDRESS

78 Green Lanes
Palmers Green
London
N13 6BE

OFFICE DETAILS

020 8888 6081

www.castles.london

